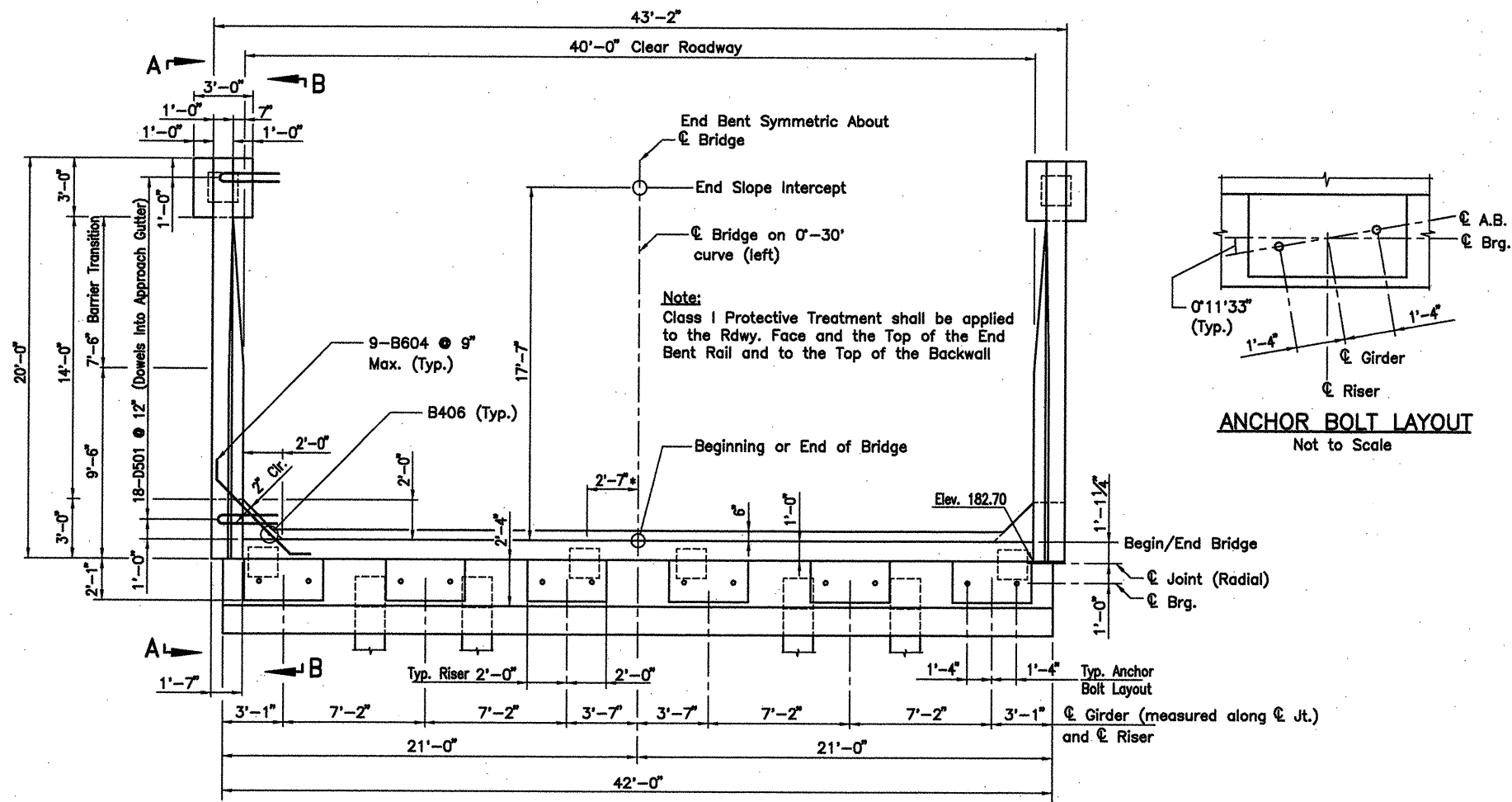


COMPANY\1999 JOBS\99-044 AHTD\WHITERIVER\JOB 110395\1EndBent\1.txd ACAD SCALE: 1/4" = 1'-0"

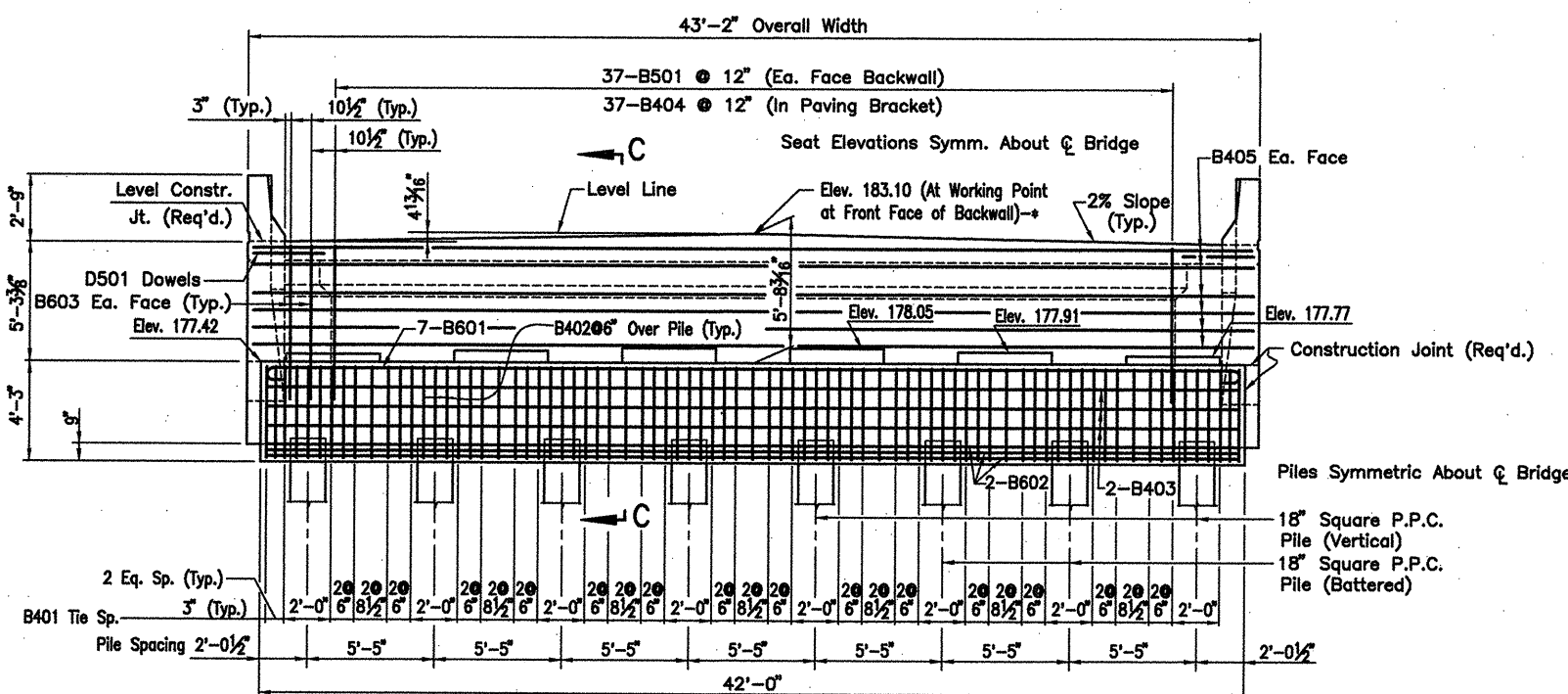
DATE REVISED	DATE FILMED	DATE REVISED	DATE FILMED	FED. ROAD NO.	STATE	FED. AID PROJ. NO.	SHEET NO.	TOTAL SHEETS
					ARK.			
				JOB NO.	110395	32	203	
				06830	END BENT	47030		



ANCHOR BOLT LAYOUT
Not to Scale

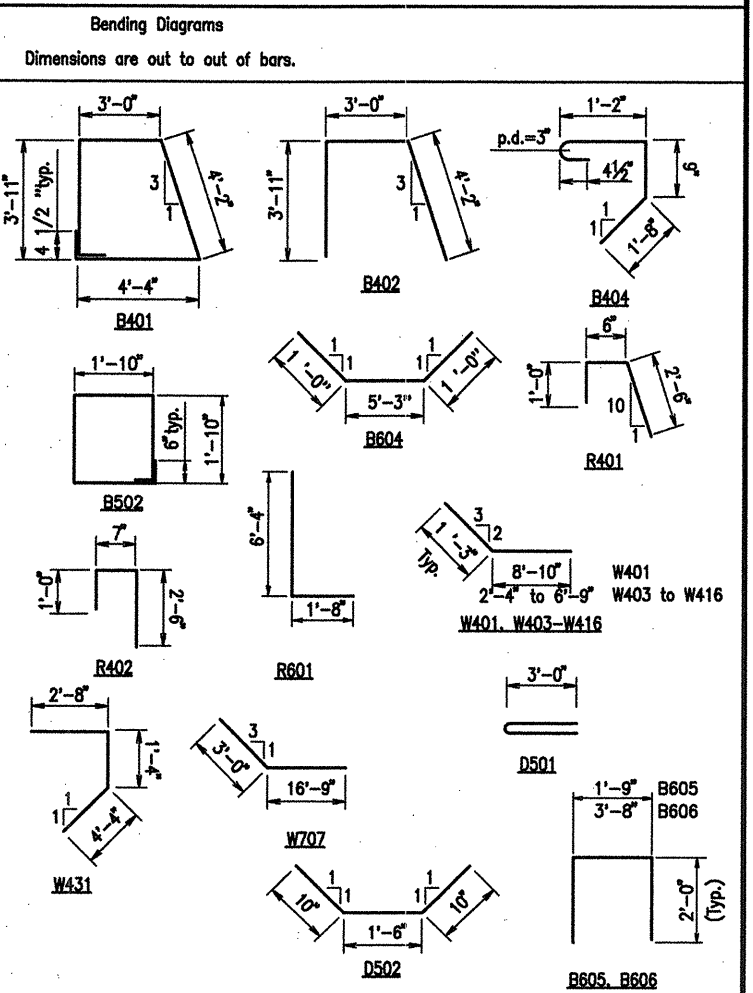
PLAN
Scale: 1/4" = 1'-0"

* - For Finishing Top of Backwall, see "Rounding Detail", Dwg. No. 47055.
For Details of Elastomeric Bearing, See Dwg. No. 47100.

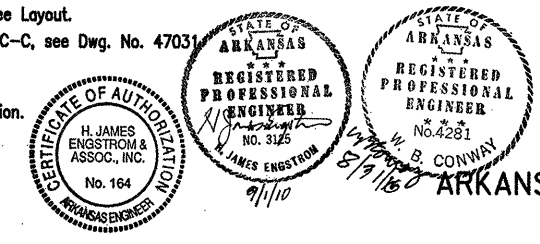


ELEVATION
Scale: 1/4" = 1'-0"

Mark	No.	Req'd	Length	P.D.
B401	55		15'-9"	2"
B402	24		10'-11"	2"
B403	6		41'-8"	Str.
B404	37		4'-0"	2"
B405	12		42'-10"	Str.
B406	6		7'-2"	Str.
B501	74		7'-5"	Str.
B502	12		7'-10"	3 3/4"
B601	7		41'-8"	Str.
B602	6		41'-8"	Str.
B603	8		7'-5"	Str.
B604	18		7'-3"	4 1/2"
B605	30		5'-5"	4 1/2"
B606	24		7'-4"	4 1/2"
B801	40		6'-0"	Str.
R401	26		3'-10"	2"
R402	8		3'-11"	2"
R403	12		19'-8"	Str.
R601	24		7'-11 1/2"	4 1/2"
R602	6		5'-6"	Str.
R603	12		2'-8"	Str.
W401	6		10'-1"	2"
W402	6		11'-2"	Str.
W403 to W416	2 Ea.		3'-7" to 8'-0"	2"
W417 to W430	2 Ea.		4'-8" to 9'-3"	Str.
W431	4		8'-3"	2"
W701	8		19'-8"	Str.
W702	4		16'-0"	Str.
W703	4		13'-4"	Str.
W704	4		10'-8"	Str.
W705	4		8'-0"	Str.
W706	4		5'-4"	Str.
W707	4		19'-9"	5 1/4"
D501	36		6'-1"	3 3/4"
D502	37		3'-2"	3 3/4"



END BENT NOTES:
All concrete shall be Class "S" with a minimum 28-day compressive strength $f'_c = 3500$ psi. Concrete shall be poured in the dry and all exposed corners to be chamfered 3/4" unless noted otherwise.
All reinforcing to be AASHTO M31 or M53, Grade 60.
Backwall shall not be poured before beams are in place and concrete span pours have been made.
If anchor bolts are drilled into cap, top reinforcing bars shall be properly placed to avoid damage.
Structural steel in end bents shall be AASHTO M270, Gr. 50W and shall be paid for as "Structural Steel in Plate Girder Spans (AASHTO M270, Gr. 50W)".
For additional information, see Layout.
For Sections A-A, B-B and C-C, see Dwg. No. 47031.
NOTE:
Flat curve. No Super-elevation.



ALTERNATE NO. 1
DETAIL OF BENTS - WHITE RIVER
ABUTMENTS - END BENT 1
(SHEET 1 OF 2)
WHITE RIVER STR. & APPRS.
(CLARENDON) (PH III) (F)
MONROE COUNTY
ROUTE 79 SEC. 13
ARKANSAS STATE HIGHWAY COMMISSION
LITTLE ROCK, ARK.

Engstrom/Modjeski and Masters, Inc.

DRAWN BY: FS DATE: Nov. 07 FILENAME: b1103951_a1
CHECKED BY: YO DATE: Nov. 01 SCALE: 1/4" = 1'-0"
DESIGNED BY: FS DATE: Nov. 01
BRIDGE NO. 06830 DRAWING NO. 47030